


Release Notes

xMid Version 25.11

Content

1. General.....	2
2. Administration.....	3
Legend.....	4

1. General

<p>Description</p> <p>Extension: NEO connection > customer transfer to NEO</p> <p>It is now possible to automatically transfer customer data from xMid to NEO (Schmetterling/Argus). You can find more information about this in our manual.</p> 
<p>Bug: payment control > displaying rows in the results grid</p> <p>Under advanced order search > payment control, the rows in the output list were displayed incorrectly in the results grid. This has been fixed and the display in the grid now matches the result depending on the filter setting of 10/20/50 etc. rows and is displayed correctly again.</p>
<p>Extension: booking search > reports > Report payments</p> <p>The report payments area in the accounting reports has been optimised so that sorting, filtering and searching now produce faster results.</p>
<p>Extension: Update for airline code 'FJ'</p> <p>The airline code 'FJ' has been updated to the name 'Fiji Airways' with BSP code 260.</p>

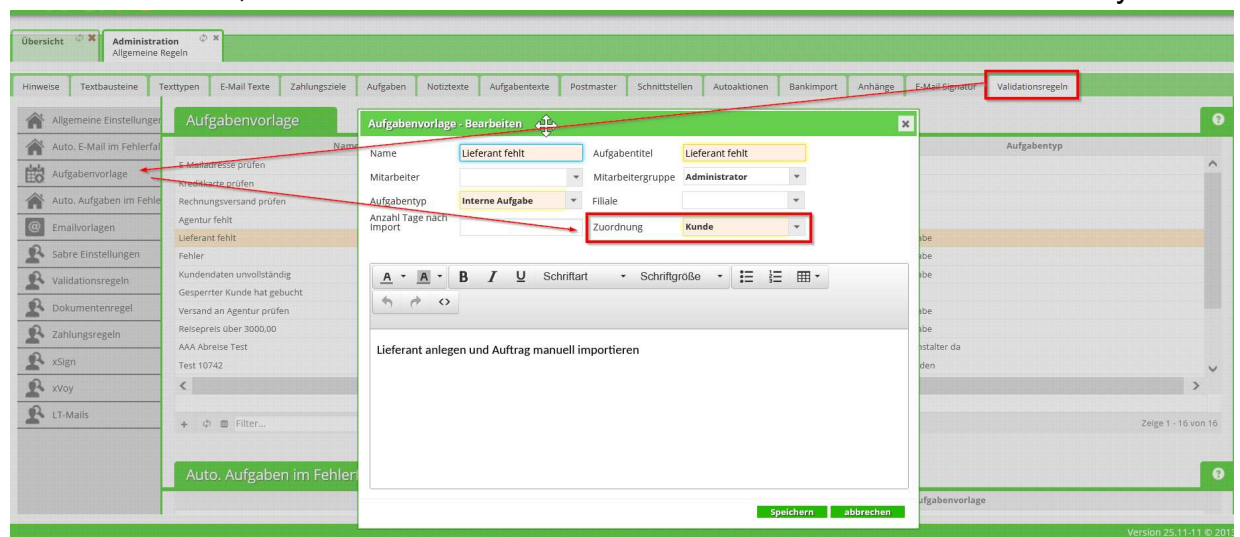
2. Administration

Description

Extension: Validation rules > Task template

If the 'assignment' field in common rules > validation rules > task template is not filled in, no task will be created in the event of an error.

To avoid this, this field has now been defined as a mandatory field.



Bug: orders > special characters in assignments

If the name of a category contained a special character under administration > orders > assignments, the criteria for that category could not be edited.

Special characters in names can now be processed in this area.



Extension: common rules > interface option 'don't use paym. method from booking'

The function for the interface option 'don't use paym. method from booking' has been extended. The option is also taken into account for update imports.

If the payment method from an interface is not to be transferred, but rather the one stored in the customer profile, this option must be activated for the respective customer type.

For xRes customers with this option activated, this means that with an A-collection agency, the payment method no longer has to be changed manually in the order during an update import.

Legend

Extension = Software extension, new function may be associated with additional costs. Please contact your support if you are interested, we will be happy to help you with advice.

Bugfix = Fixing of errors